



**CLASS A
BLASTER**

AS/NZS 4233.1

AUSSIE MONSOON SCUD SERIES

CLASS A BLASTER



OPERATOR'S INSTRUCTION MANUAL

Jan 2020



4 year warranty



Covers:

Monsoon Scud 200

Monsoon Scud 300

Monsoon Scud 400

NEW Monsoon Scud 400 M-A

NEW Hurricane A

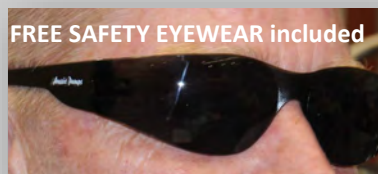


IMPORTANT:

**TO REDUCE RISK OF INJURY, READ OPERATING
INSTRUCTIONS CAREFULLY BEFORE USING EQUIPMENT**

REF: AMON_3PH_A_1

FREE SAFETY EYEWEAR included



Aussie Pumps

AUSSIE HIGH PRESSURE BLASTER RISK ASSESSMENT

MODELS:

In line with the National Occupation Health & Safety Commission's requirements the data below applies to the following Aussie Scud high pressure water blasters:

- ♦ Monsoon 200
- ♦ Monsoon 300
- ♦ Monsoon 400
- ♦ Monsoon Maxi A
- ♦ Hurricane A



**CLASS A
BLASTER**
AS/NZS 4233.1

FREE ONLINE
Aussie Safe Operator training

NB: Class A machine operators do not require certification under AS/NZS 4233.1

DESCRIPTION:

Electric drive high pressure cold water blasters designed for professional cleaning applications.

MATERIAL CONSTRUCTION:

Aussie Monsoon Scud pressure washers are mounted on heavy duty trolley mounted frames. They consist of a quality 4 pole electric motor driving a triplex style three piston high pressure pump. The machines are supplied with wheels for ease of portability and manoeuvrability. The machines can be supplied with hose reels and up to 45 metres of high pressure hose to increase operator convenience.

RISK RANKING METHOD:

Risk is the combination of the likelihood of a specific unwanted event and the potential consequences if it should occur.

RISK RANKING TABLE:

The consequences (loss outcomes) are combined with the likelihood (of those outcomes) in the risk ranking table to identify the risk rank of each loss event (e.g. a consequence of 'Moderate' with a likelihood of 'Likely' yields a risk rank of 17).

The table yields a risk rank from 1 to 25 for each set of probabilities and consequences. A rank of 25 is the highest magnitude of risk that is a highly likely, very serious event.

A rank of 1 represents the lowest magnitude of risk, an almost impossible very low consequence event.

Likelihood	Use the matrix to determine the risk	Consequences				
		Insignificant	Minor	Moderate	Major	Catastrophic
Almost certain		High 11	High 16	Extreme 20	Extreme 23	Extreme 25
Likely		Moderate 7	High 12	High 17	Extreme 21	Extreme 24
Possible		Low 4	Moderate 8	High 13	Extreme 18	Extreme 22
Unlikely		Low 2	Low 5	Moderate 9	High 14	Extreme 19
Rare		Low 1	Low 3	Moderate 6	High 10	High 15

Controls must be taken to either eliminate or minimise the risk.



Risks associated with operating a high pressure cleaner ... for use in daily **SAFE WORK METHOD STATEMENT**

Hazard	Risk	Risk Rating	Controls
Entanglement with hose (tripping, falling)	Personal injury of the operator or bystanders	13	<ul style="list-style-type: none"> Warning stickers hose reel option Ensure firm footing before operating machine
Injury from high pressure water	Personal injury of the operator or bystanders	13	<ul style="list-style-type: none"> Warning notice on blaster Wear eye protection & PPE Use high pressure resistant gloves Always point spray jet at area to be cleaned Use barriers to keep bystanders away from work area Stop jetting if persons enter working area Never leave machine unattended Never point hose at any person or animal Never put your hand over the spray nozzle when operating Stop operating if a malfunction occurs
Ergonomic lifting or movement on site,	Personal injury	18	<ul style="list-style-type: none"> Operator's Manual Staff training
Electrocution	Personal injury	14	<ul style="list-style-type: none"> Warning sticker Disconnect from power before servicing machine
Unsecured machine, moves unattended	Cause of accidents and/or injury	8	<ul style="list-style-type: none"> Use of chocks behind wheels or ute mounting kit
Dislodged particles in atmosphere	Sight damage	20	<ul style="list-style-type: none"> Never clean asbestos with high pressure water Use of eye protection
Slipping on wet surface	Personal injury	17	<ul style="list-style-type: none"> Use of proper footwear
Contact with chemical cleaners used to clean surfaces	Skin contact could result in burns, skin irritation etc. Fumes from some chemicals may lead to respiratory problems	22	<ul style="list-style-type: none"> Chemical cleaners to only be used as a last resort when other methods have failed. Areas to be kept well ventilated. Staff to follow manufacturers' instructions at all times for use, storage & disposal. Staff to wear the appropriate PPE Respiratory protection when required

NEW Aussie
4,000 psi Monsoon 400 Maxi A &
5,000 psi Hurricane A

Aussie Monsoon series ...
 now available with
 stainless steel frame



**CLASS A
 BLASTER**
AS/NZS 4233.1

NB: Class A machine operators do not
 require certification under AS/NZS 4233.1

AUSSIE ECO CLEAN BLASTER OPERATING & MAINTENANCE INSTRUCTIONS

Contents:

Blaster Risk Assessment	2	Pressure washing	8
Warranty	4	Applying detergent	8
Safety precautions	5	Stopping the machine	8
Specifications	5	Care & Maintenance	9
Care of frame & wheels	5	Troubleshooting	10
Assembly & preparation for use	6	Parts identification	11
Machine preparation	6	Pump parts	12-14
Hose connections	7	Service record	15
Before starting the machine	8	Warnings	16
Starting the engine	8	Pressure cleaner daily checks	16
		Three monthly regular service	16

CONGRATULATIONS on the purchase of an Aussie Monsoon Scud professional high pressure water blaster. These top of the range machines have been designed to be easy to use, simple to service and offer reliability and performance.

Before attempting to operate your machine please read this Instruction Manual thoroughly following all directions carefully. By doing so you will ensure safe operation of the unit and will enjoy long and trouble free service from your heavy duty water blaster.

GUARANTEE ... EXCLUSIVE 4 YEAR PUMP

This Aussie Eco Clean product is guaranteed against faults in manufacture for two years from purchase. The Bertolini pump has a four year warranty, but must be serviced by an authorised service agent every six months to maintain this warranty. Keep your receipt as proof of purchase and all service receipts. This guarantee is invalid if the product is found to have been abused in any way, or not used for the purpose for which it was intended.



Routine maintenance is the owner's responsibility. Failure to maintain the machine in line with the services outlined on the back page will invalidate warranty. High pressure accessories carry a 3 month warranty.

Where possible return faulty goods to the place of purchase. No products can be returned to us without our prior permission. The reason for return must be clearly state.

N.B. Warranty is not transferrable to third parties in the event of sale of the machine within the warranty period. Please note that any parts used in warranty repairs are guaranteed for a period limited by the original warranty of the parent product.

Our goods come with guarantees that cannot be excluded under the Australian Consumer Law. You are entitled to a replacement or refund for a major failure and for compensation for any other reasonably foreseeable loss or damage. You are also entitled to have the goods repaired or replaced if the goods fail to be of acceptable quality and the failure does not amount to a major failure.

The benefits under the Aussie Pump warranty are in addition to other rights under Australian Consumer Law.



SAFETY PRECAUTIONS - IMPORTANT

1. **NEVER** direct the spray jet at any person or animal. Keep hands and feet clear of the cleaning nozzle at all times.
2. **NEVER** direct spray jet at any surface that may contain asbestos material.
3. **NEVER** hold a finger over the high pressure nozzle.
4. **NEVER** direct the spray jet at the machine itself or any electrical equipment.
5. After use release the pressure in the high pressure hose by operating the gun trigger.
6. **DO NOT** attempt any mechanical repair. If you have a problem with your machine contact your local Aussie Eco Clean Service Division, phone (02) 8865 3500.
7. **NEVER** supply any liquid other than water to the pump inlet.
8. **DO NOT** run dry
9. **NEVER** pull the high pressure hose if it has formed kinks or nooses.
10. **NEVER** pull the hose over sharp objects.
11. **DO NOT** join high pressure hoses. The connectors may leak and cause the
- unloader to wear prematurely. Buy extra length hoses if extended range required.
12. **DO NOT** attempt to disconnect any hose or coupling with pressure still in the hose.
13. **DO NOT** operate the machine whilst standing on ladders, use a platform tower or scaffolding.
14. Disconnect power when machine not in use..
15. **DO NOT** operate if power cable is damaged, contact a certified electrician for replacement.
16. **DO NOT** try to repair a leak in the hose or connection while the system is under pressure.
17. **DO NOT** substitute any component part on this machine. Use of incorrect parts could cause serious personal injury.
18. Children should **NOT** be allowed to use the machine.
19. Use safety goggles and steel cap boots when using the machine.
20. **DO NOT** use machine if there is any chance water has frozen inside the pump or hoses. Thaw thoroughly before starting.



SPECIFICATIONS

Model	Safety classification	Motor	Pump Model	Pump Pressure (psi)	EWP (psi) with turbo lance	Flow rate (lpm)	Pump rpm
Monsoon Scud 200	Class A	5.5kW, IP56	TTL1520	3000	4785	15	1450
Monsoon Scud 300	Class A	7.5 kW, IP56	TTL2120	3000	4785	21	1450
Monsoon Scud 400	Class A	7.5 kW, IP56	TTL1330	4000	6400	13	1450
Monsoon Scud 400 Maxi A	Class A	11 kW, IP56	TTL2028	4000	6400	20	1450
Hurricane A	Class A	12.5kW, IP56	KTL 1635	5000	8500	16	1725



CARE OF FRAME & FLAT FREE TYRES ... MAINTAIN OPTIMUM PERFORMANCE

Aussie Monsoon blasters now come fitted with top quality **flat free tyres**. To maintain tyre shape ...

1. Ensure that straps used to secure the unit during transit are not over tightened to the point where
- tyres misshape.
2. Do not leave the unit strapped down for extended periods.
3. Do not drop the unit; this could cause frame distortion or damage bearings.



ASSEMBLY AND PREPARATION FOR USE

Before proceeding with assembly of your new Aussie Eco Clean blaster, check that all parts listed below are included.

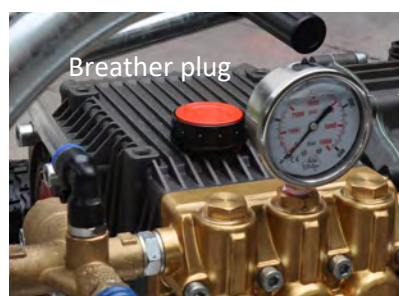
- 1 x Gun handle assembly
- 1 x High pressure hose
- 1 x Lance and nozzle assembly
- 1 x safety eyewear



HEAVY DUTY LANCE: To assemble the gun/lance, screw together and check nozzles have been fitted to end of lance.

With the machine on a level surface the oil level should cover the red spot in the sight glass on the side of the pump. If necessary, top up with SAE 75W-90.

Do not mix different grades of oil as this may affect the machines performance. If alternative oil is used, first empty out oil by unscrewing drain plug in bottom of machine.



A. Initial Start Up

ELECTRICAL

NOTE: The electrical installation must be performed by a qualified technician authorised to do so. (in compliance with AS/NZS 3000 wiring standards and appliance safety standards AS/NZS60335.2.79 & IEC60335-2-79).

Ensure power supply, all wiring connections and voltages are of sufficient rating to comply with equipment requirement (details supplied on electrical data plate on motor).

Plug fitted must match wall socket type.

Do not use extension leads to supply this machine.

PUMP

1. Check the oil in the pump.



2. Ensure breather plug is fitted to pump.

WARNING: Before operation ensure top mounted travel plug is replaced by breather plug. Failure to fit breather and keep clean can result in over pressuring of oil chamber (crank case) and can blow oil seals. This will void warranty.

HIGH PRESSURE SPRAY CAN PENETRATE THE SKIN & CAUSE SERIOUS INJURY!

Never point the spray gun at yourself, other people or animals.

Should the spray penetrate the skin **SEEK MEDICAL ATTENTION IMMEDIATELY!**

Aussie Safety Protection Kit



B. Hose Connections

1. Connect high pressure hose to machine outlet.
2. If optional low pressure downstream, in-line chemical injector is to be used, connect the injector tube to the detergent inlet and place the other end of the tube, with the strainer attached, in the chemical container (not supplied).
3. Connect gun/lance assembly to high pressure hose.
4. Check inlet water filter is clean then connect water supply hose to machine. Use a 25mm (minimum) hose .

Incoming water supply must deliver double the flow of the machine. If questionable, check supply at machine. If supply is insufficient, do not operate from this outlet. For residential use, the outlet closest to the meter will usually deliver the highest flow rate. Connect only to clean town water supply.

Warning: Do not operate from tank or pond. Doing so will cavitate the pump causing damage. Cavitation or pump starvation is not covered by warranty. Cavitation is a phenomenon causing vacuum pockets to form within the pump that eventually implode under pressure pitting the internal pump surfaces.



Fitting instructions for optional hose reel

- Securely clamp the hose reel mounting bar across the top of the Scud frame using the two sets of nuts and bolts supplied. Aussie Pumps recommends using Loctite on the bolts to prevent them vibrating loose.



Fit hose reel to the mounting bar using the four sets of nuts and bolts supplied. Ensure all bolts are securely tightened and use Loctite to prevent them vibrating loose.

The reel should be positioned so that it rotates fore/aft to aid fitting whip hose.



Connect whip hose to high pressure outlet on pump.



Fit handle to reel.

Fit gun to hose using C1500.24 nipple.

Start up machine (see below) and check for leaks.

All leaks must be rectified before using machine.

C. Before starting the machine

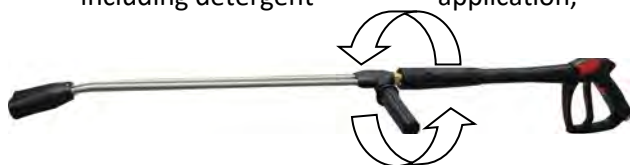
1. Ensure machine is level
2. Connect & turn on water supply.
3. Pull gun trigger until water starts to flow in a steady stream then release trigger.
4. Ensure firm footing and prepare for kick-back in gun/lance as machine is turned on.

D. Starting the blaster

1. Ensure unit is plugged into a suitable power outlet.
2. Turn switch on blaster to ON, the unit is now ready to use.

**E. Pressure washing****WEAR PROPER FACE PROTECTION WHEN OPERATING PRESSURE WASHER!**

1. For high pressure jetting rotate side grip on dual lance backwards until it stops. Fine control of pressure/flow can be made with small adjustments to the rotation of the grip. There is no pressure adjustment available on single lance options.
2. When low pressure and high flow is required, including detergent application,



unwind grip two complete turns. Adjust the detergent control on the pump as required.

NOTE: Check the system for water leaks, oil leaks, hose kinks, etc. Correct any problems before proceeding.

Machine is now ready for operation. Pull trigger on gun to release jet of water.

F. Applying detergent

(not available on Hurricane)

1. Prepare pressure washer detergent solution as required by manufacturer.
2. Place detergent siphon tub/filter into solution.
3. Adjust double lance to low pressure setting.
4. Apply cleaning solution to a dry surface, starting at lower portion of areas to be washed and work upward, using long overlapping strokes.
5. Allow time to detergent to activate and then rinse off. DO NOT allow detergent to dry on.

IMPORTANT; You must flush the injection system after each use by placing siphon hose into a bucket of clean water, then run pressure washer in low pressure for 2 minutes.

G. Stopping the machine

1. If using the detergent injector, flush out the chemical by running clean water through the system.
2. Allow machine to run for 1 minute without load to cool before stopping.
3. Turn switch to OFF & turn off water supply.
4. Pull gun trigger to release all pressure in the system, then LOCK THE TRIGGER.
5. Hoses may now be disconnected from the machine.



Failure to release pressure before disconnecting the hose quick coupler will result in the quick coupler o-ring seal blowing out. This o-ring must be replaced before operating machine.

DO NOT RUN EXCESSIVE BY-PASS

SWITCH MACHINE OFF WITHIN TWO MINUTES OF CEASING OPERATION AS EXCESSIVE BY-PASS CAN CAUSE HEAT BUILD UP IN PUMP AND SUBSEQUENT DAMAGE.
EXCESSIVE BY PASS RUNNING VOIDS WARRANTY!!



UNLOADER SETTING

The high pressure unloader on the machine is factory set to operate the pump at it's rated pressure.

DO NOT ADJUST. Tampering with the unloader will void warranty and can be dangerous.

WARNING:

CHECK NOZZLES AND REPLACE IF WORN

If pressure drops off, check nozzle for wear. Nozzles should be replaced on a regular basis (every month for machines in regular use, every 3 months for machines used intermittently. Using the machine with the incorrect nozzle size or worn nozzle will void warranty and can be dangerous to the operator.

CARE AND MAINTENANCE:

AFTER EACH USE

- If detergent injector has been used, it is essential to flush the machine with clean water after use.
- Disconnect power.
- Regularly check the power cable for damage and get a certified electrician to replace it if required.

STORAGE

Store the washer in an upright position, preferably drained of water if there is a danger of freezing.

If there is a danger of freezing anti-freeze should be mixed with the flush water or the machine must be completely drained. After the final flush stop the machine. **DO NOT** allow the machine to idle for more than 15 seconds. Do not run for longer without water supply.

PUMP CRANKCASE LUBRICATION

Proper pressure washer pump crankcase lubrication will help extend the working life of the machine. Follow these important guidelines. We recommend keeping a simple service log book (see page 15).

- Change oil in pump after initial 50 hour run-in period. (SAE 75W-90)
- Change pump oil every 3 months (or 200 hours of use), use high quality oil. (SAE 75W-90)
- Pump oil level can be checked with the dip stick under the breather cap or by viewing the oil sight gauge where fitted. The oil level is correct

if level is in the centre of the gauge. If oil level is low, fill to correct level with recommended oil (SAE 75W-90). **DO NOT OVERFILL CRANKCASE!**

If the oil in the sight glass appears milky the pump should be serviced, and the oil replaced.

PREVENTATIVE MAINTENANCE

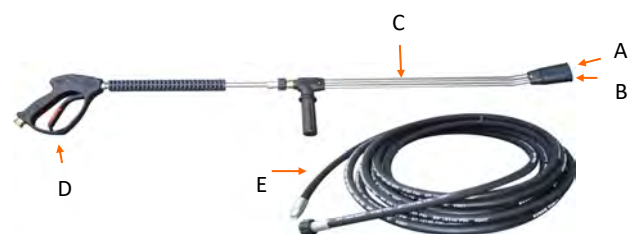
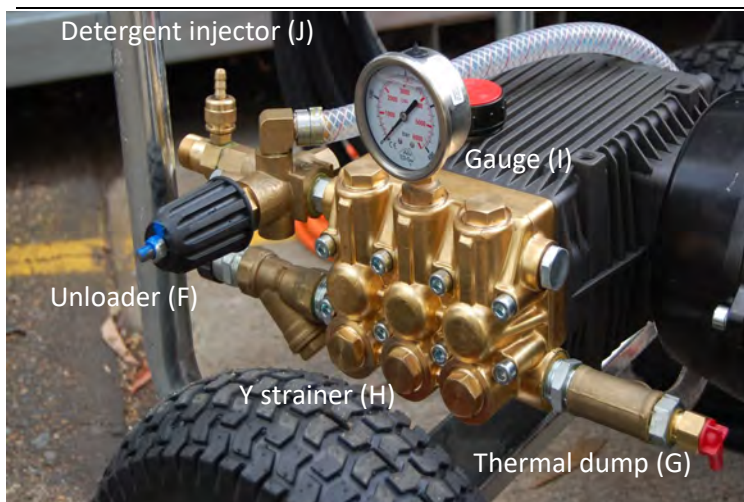
- Keep filter in supply hose connection clean, rinse regularly.
- Use correct size nozzles for machine and replace when worn, check serial tag for correct size.
- Drain water from pressure hoses, gun/lance assembly and accessories after use.
- Protect pump from freezing. Failure to remove water from the pump in freezing temperatures will result in damaged pump manifold.
- **DO NOT** tamper with unloader valve adjustment or alter motor speed.
- **DO NOT** siphon chemicals through the pump, it is designed for water only.
- Incoming water supply must not exceed 60°C, otherwise pumps seal damage could result



TROUBLE SHOOTING GUIDE

FAULT	CAUSE	REMEDY
Pump running normally but pressure low on installation	Pump sucking air Valves sticking Unloader valve seat faulty Nozzle incorrectly sized	Check water supply and possibility of air ingress. Check and clean or replace if necessary Check and replace Check and replace Check and replace
Fluctuating Pressure	Valves worn Valves blocked Pump sucking air Worn piston packing	Check and replace Check and replace Check water supply and air ingress at joints in suction line Check and replace
Pressure low after period of normal use	Nozzle worn Check valves worn Check valves blocked Unloader valve seat worn Worn piston packing Pistons cracked as a result of dry running	Check and replace Check and replace Check and clean Check and replace Check and replace Replace pistons
Pump Noisy	Air in suction Broken or weak suction or delivery valve spring Foreign matter in valves Worn bearing Excessive temperature of liquid	Check water supply and connections on suction line Check and replace Check and clean Check and replace Reduce temperature
Presence of water in oil	Oil seal worn High humidity in air Piston packing worn	Check and replace Check and change oil twice as often Check and replace
Water dripping below pump	Piston packing worn O.R plunger retainer worn	Check and replace Check and replace
Oil Dripping	Travel plug in use on pump Oil seal worn	Replace with breather plug Check and replace if necessary
Unloader switches repeatedly when gun is off	Leaking gun and/or pressure pipe. Leaky sleeve Worn out kick-back valve body Leaky seals	Renew gun, seal pressure pipe Renew sleeve Check and renew as necessary kick-back valve plate and seat Renew seals
Leaky piston rod	Defective O-Ring/Support Ring	Renew piston rod seals and examine surfaces in guide case
Leaky by-pass at nominal pressure	Nozzle too small, too much water. Worn out by-pass valves	Install larger nozzle Examine and renew as necessary
Pressure gauge shows high pressure fluctuations when shutting off gun	Valve set too high above operating pressure Dirty valve	Adjust the unloader at the operating pressure. Clean valve (removing lime deposits etc). Grease parts before installing.
Pressure in supply line when running on by-pass	Dirty or worn low pressure valves	Remove & clean or replace low pressure valves
Motor hums when switched on but does not start	Main voltage too low Spray gun not activated Cross section of extension lead too small	Check electrical connection Activate spray gun when switching on Use correct dimension extension lead

PARTS IDENTIFICATION

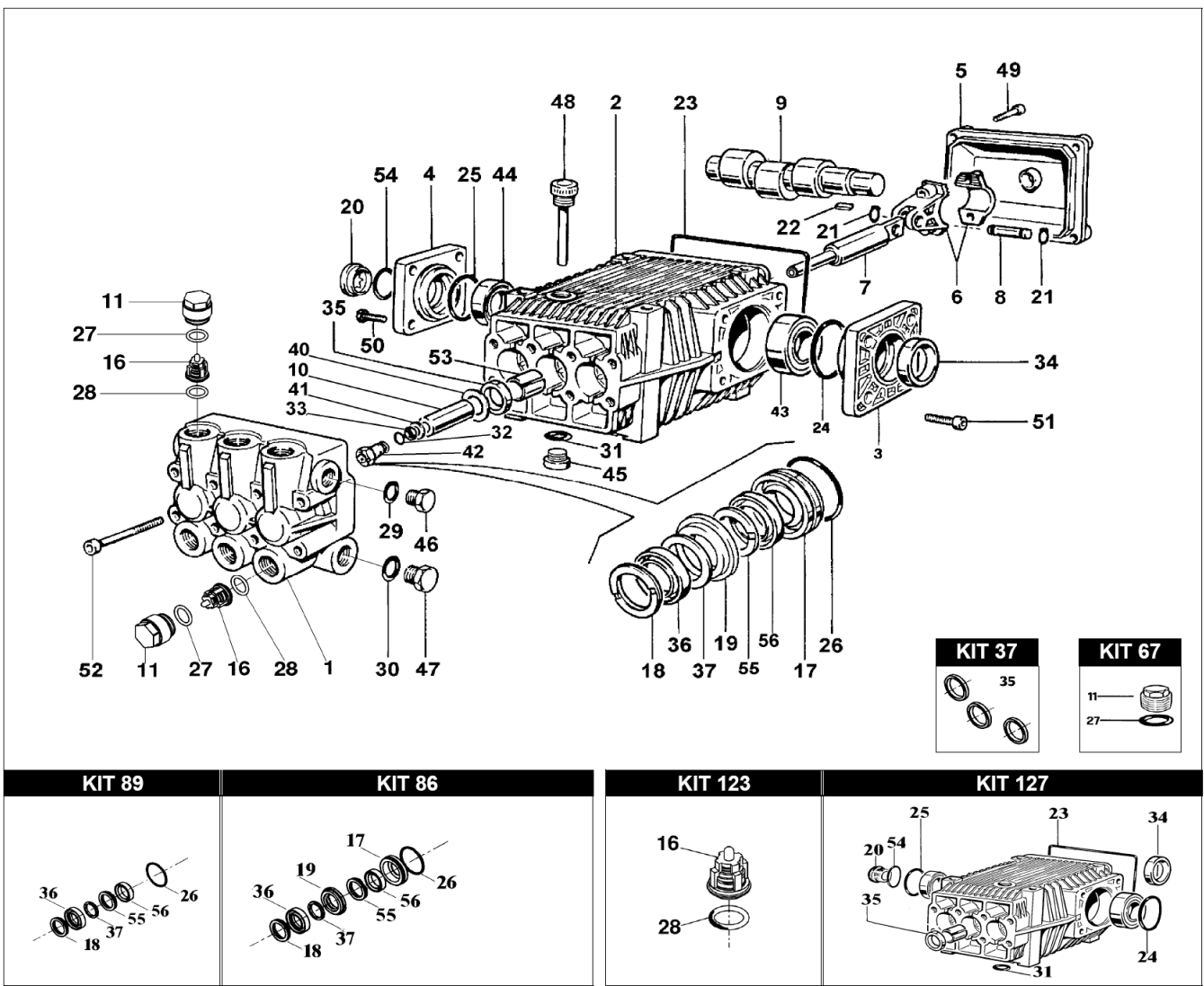


Use motor size & pump model to identify your machine:

Model	Motor	Pump Model	Pump Pressure (psi)	EWP	Flow rate (lpm)	Pump rpm
Monsoon Scud 200	5.5kW, IP56	TTL 1520	3000	4785	15	1450
Monsoon Scud 300	7.5 kW, IP56	TTL 2120	3000	4785	21	1450
Monsoon Scud 400	7.5 kW, IP56	TTL 1330	4000	6400	13	1450
Monsoon Scud 400 Maxi A	11 kW, IP56	TTL 2028	4000	6400	20	1450
Hurricane A	12.5kW, IP56	KTL 1635	5000	8500	16	1725

Position	Part No Nozzles	Description	200	Monsoon Scud 300	400	400 Maxi A	Hurricane A
A	C915045M	HP NOZZLE (15° ANGLE, TIP SIZE 45)	x				
	C915065M	HP NOZZLE (15° ANGLE, TIP SIZE 65)		x			
	C915050M	HP NOZZLE (15° ANGLE, TIP SIZE 50)				x	
	C915035M	HP NOZZLE (15° ANGLE, TIP SIZE 35)			x		x
B	C915500MSS	LP DETERGENT NOZZLE	x	x	x	x	
Lance & Gun							
C	C3924.01	684MM SS DUAL LANCE	x	x	x	x	
	MPA40026100	S3-350 SS SINGLE LANCE					x
D	M4022209003	AL55 GUN WITH MELTED HANDLE & QC	x	x	x	x	
	CGPDG5010	5000 PSI RATED PRO GUN					x
Hose							
E	AHW06M22X2X10	10 MTR HP HOSE (R2, 5800 PSI)	x	x	x	x	
	AHW06FB6FB6X10	10 MTR HP HOSE (R2, 5800 PSI)					x
Unloader							
F	C4910.10	UNLOADER VALVE (3600 PSI)	x				
	BVB80/280	UNLOADER VALVE (4000 PSI)		x			
	BVB350	UNLOADER VALVE (5100 PSI)			x	x	x
Thermal Dump Valves							
G	MPA60063070	THERMAL DUMP VALVE 1/2"	x	x	x	x	x
Inlet Strainer							
H	AYSTRAINER3/4"	3/4" Y STRAINER	x	x	x	x	x
Gauge							
I	AGCDR0102	6,000 PSI PRESSURE GAUGE	x	x	x	x	x
Chemical Injector							
J	FXZ1763	CHEMICAL INJECTOR	x	x	x	x	
Switch							
	ASWITCH20A3	ON/OFF SWITCH (20 AMP)	x				
	ASWITCH25A3	ON/OFF SWITCH (25 AMP)		x	x	x	
	ASWITCH32A3	ON/OFF SWITCH (32 AMP)					x
Electric Motor							
	A140060T001	7.5HP MOTOR (5.5 KW) 24MM	x				
	A140060T002	10HP MOTOR (7.5 KW) 24MM		x	x		
	A140060T024	15HP MOTOR (11 KW) 24MM				x	
	A140060T020	17HP MOTOR (12.5 KW)					x
Pump							
	TTL1520	BERTOLINI 200 BAR PUMP, 15 LPM FLOW	x				
	TTL2120	BERTOLINI 200 BAR PUMP, 21 LPM FLOW		x			
	TTL2028	BERTOLINI 280 BAR PUMP, 20 LPM FLOW				x	
	TTL1330	BERTOLINI 300 BAR PUMP, 13 LPM FLOW			x		
	KTL 1635	BERTOLINI 350 BAR PUMP, 16 LPM FLOW					x

PUMP PARTS TTL 1520, TTL 2120 (Monsoon 200 & 300 - 2012 onwards)



Kit No.	Description	Pieces
127	Oil Seal & Sight Glass Kit	10
123	Valve Kit	12
89	Seal Kit Minor	18
86	Seal Kit Major	24
37	Oil Seal Kit	3
67	Valve cap kit	12


4 year warranty

Check out our spares and customer service page on the web for full parts breakdowns and to download our Bertolini Pump Blaster Service Essential handbookwww.aussiepumps.com.au

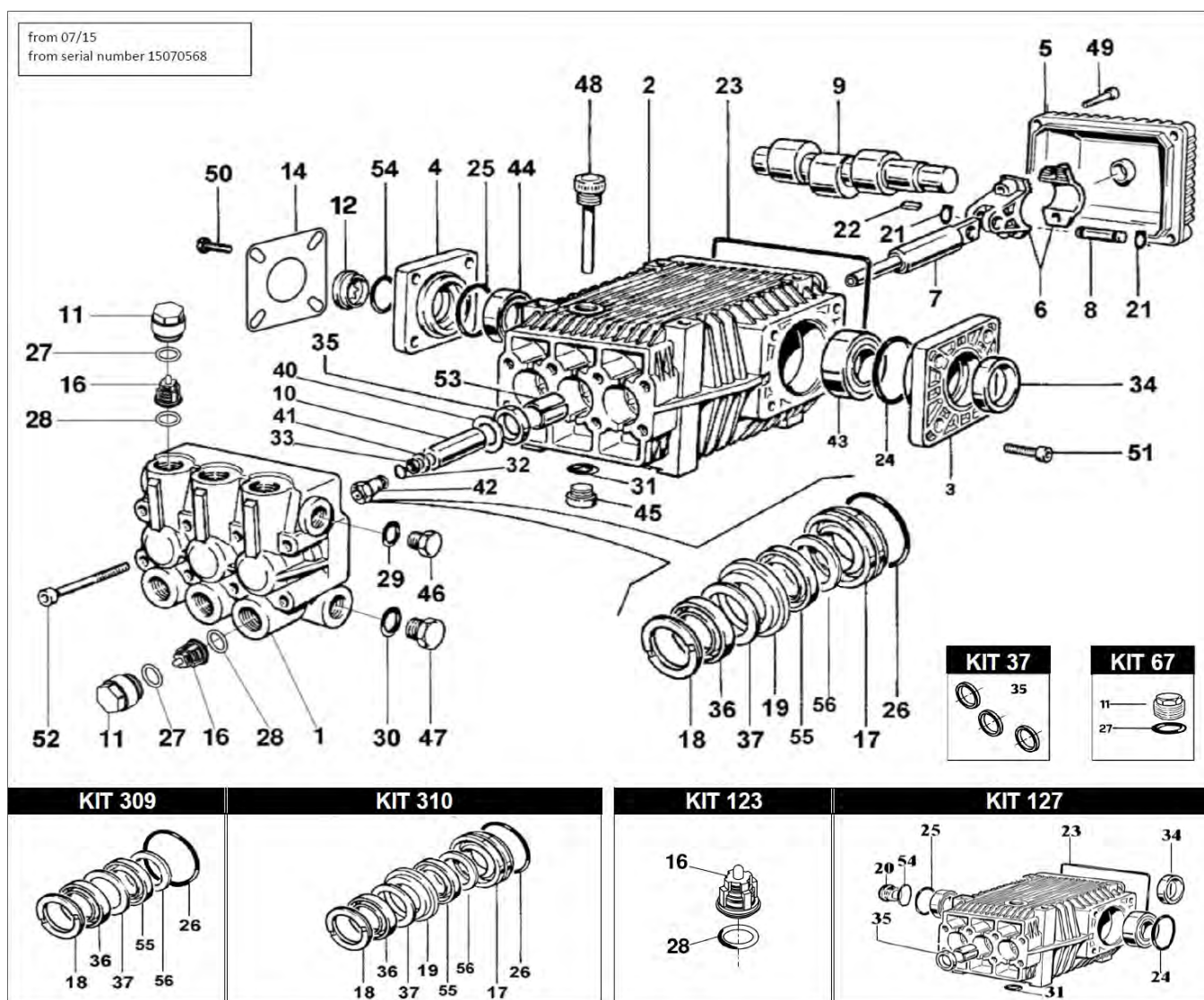


FREE SAFETY STICKERS



Call for FREE replacement safety decals

PUMP PARTS TTL 1330 TTL 2028 (Monsoon 400 & 400 Maxi A)



Kit No.	Description	Pieces
127	Full Oil seal & Sight Glass kit	10
123	Valve Kit	12
309	Seal Kit Minor	18
310	Seal Kit Major	24
37	Oil Seal Kit	3
67	Valve cap kit	12



Check out our spares and customer service page on the web for full parts breakdowns and to download our Bertolini Pump Blaster Service Essential handbook
.....www.aussiepumps.com.au

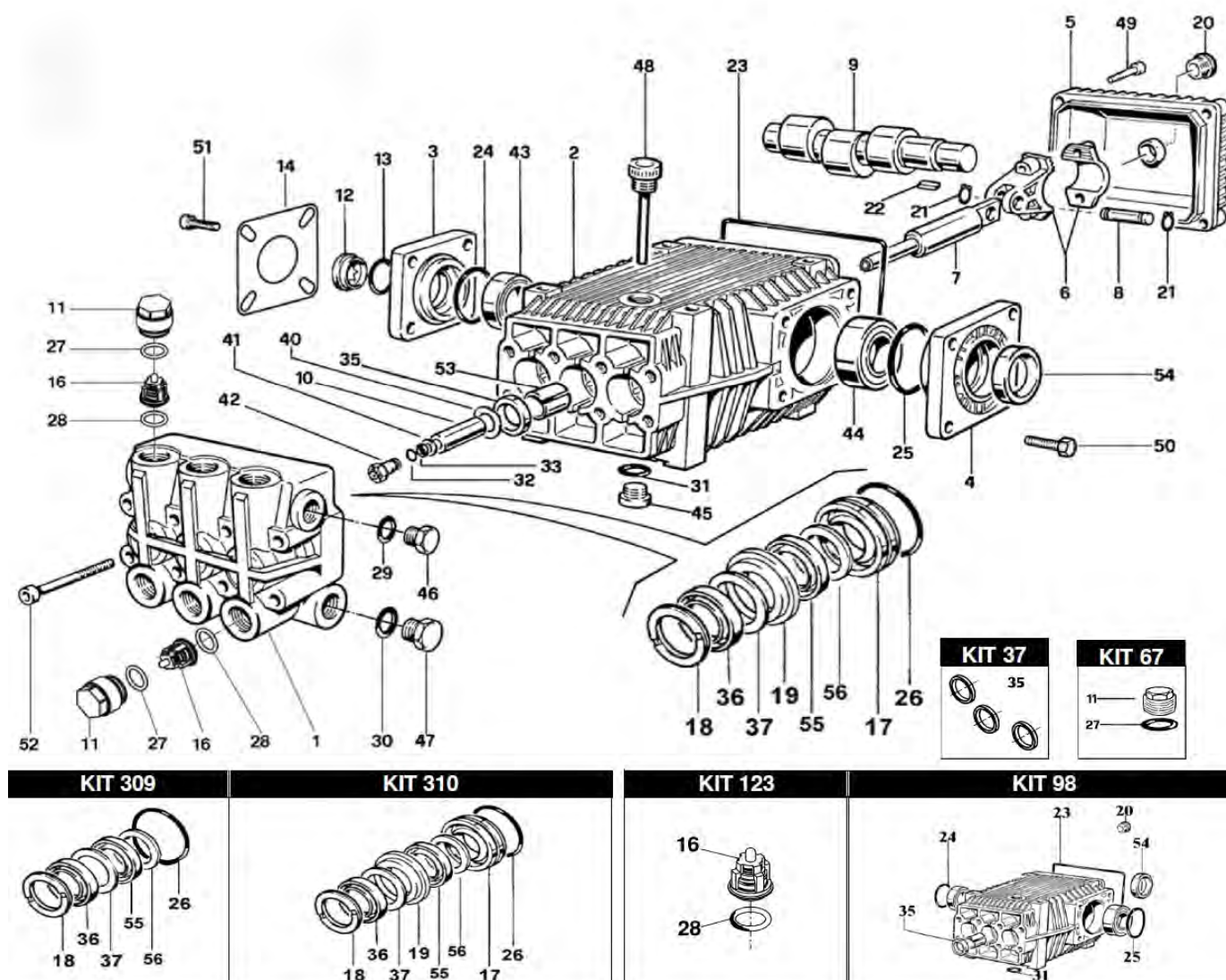


FREE SAFETY STICKERS



Call for FREE replacement safety decals

PUMP PARTS KTL 1635 (Hurricane A)



Order the right part first time ...
specify the pump model number when ordering parts.

Full parts breakdowns available online ...
www.aussiepumps.com.au

FREE pump service
guide available



Kit No.	Description	Pieces
123	VALVE KIT	12
309	SEAL KIT MINOR	19
310	SEAL KIT MAJOR	25
37	OIL SEAL KIT	3
67	CAP KIT	12
98	O-RING & SIGHT GLASS KIT	11

FREE SAFETY STICKERS



Call for FREE replacement safety decals

BERTOLINI®
pumps
4 year warranty

SERVICE RECORD

Refer to page 16 for details of service schedule. A service record must be maintained to keep warranty valid.

Service type	Tick	Date	Notes	Signed
3 month	<input type="checkbox"/>			
6 month (including oil change)	<input type="checkbox"/>			
3 month	<input type="checkbox"/>			
6 month (including oil change)	<input type="checkbox"/>			
3 month	<input type="checkbox"/>			
6 month (including oil change)	<input type="checkbox"/>			
3 month	<input type="checkbox"/>			
6 month (including oil change)	<input type="checkbox"/>			
3 month	<input type="checkbox"/>			
6 month (including oil change)	<input type="checkbox"/>			
3 month	<input type="checkbox"/>			
6 month (including oil change)	<input type="checkbox"/>			
3 month	<input type="checkbox"/>			
6 month (including oil change)	<input type="checkbox"/>			
3 month	<input type="checkbox"/>			
6 month (including oil change)	<input type="checkbox"/>			
3 month	<input type="checkbox"/>			
6 month (including oil change)	<input type="checkbox"/>			
3 month	<input type="checkbox"/>			
6 month (including oil change)	<input type="checkbox"/>			
3 month	<input type="checkbox"/>			
6 month (including oil change)	<input type="checkbox"/>			
3 month	<input type="checkbox"/>			
6 month (including oil change)	<input type="checkbox"/>			



WARNINGS

OVERSPEEDING

Do not operate machine over maximum rpm.
Over speeding can cause serious pump damage.

HIGH PRESSURE SETTING

The high pressure pump is factory set to operate at its rated pressure. **DO NOT ADJUST.**

Tampering with the pressure regulator will void warranty and can be DANGEROUS.

EXCESSIVE BYPASS

Do not run on excessive by-pass. Switch machine off within five minutes of ceasing operation as excessive by-pass can cause heat build up in pump and subsequent damage.

Excessive bypass running voids warranty.

CHECK NOZZLE MONTHLY

If pressure drops off check nozzle for wear.

Nozzles should be replaced on a regular basis (every month for machines in regular use, every three months for machines used intermittently).

Using the machine with the incorrect nozzle size or worn nozzle will void warranty and can be **DANGEROUS** to the operator.

PRESSURE CLEANER DAILY CHECK LIST

- Check pump oil level
- Check pump oil is clear (not milky). If not pump service required
- Check nozzle for wear
- Check all high pressure components for leaks:
 - gun/lance
 - HP hose
 - all fittings
- Check water filter and clean regularly
- Check unloader, safety valve and thermal dump for leaks



THREE MONTHLY REGULAR SERVICE

All professional machines need to be thoroughly serviced every three months. The service involved should include the following;

- Change pump oil after first 50 hours and then every 200 hours of service or every 6 months
- Check filter for foreign debris
- Check unloader, safety valve and thermal dump for leaks
- Check all HP components for leaks: Gun/lance, HP hose and all fittings
- Replace nozzles
- Check motor/pump key for wear. Replace if worn.



BEWARE of abrasions on hose and replace if

Aussie HP Accessories ... making light work of cleaning chores



Aussie Gritblast kit ...
remove paint & rust with ease



MORE BITE



WEAR PROTECTIVE GOGGLES & CLOTHING!



Australian Pump Industries Pty Ltd

8 Solent Circuit Norwest NSW 2153

Ph: (02) 8865 3500

www.aussiepumps.com.au info@aussiepumps.com.au